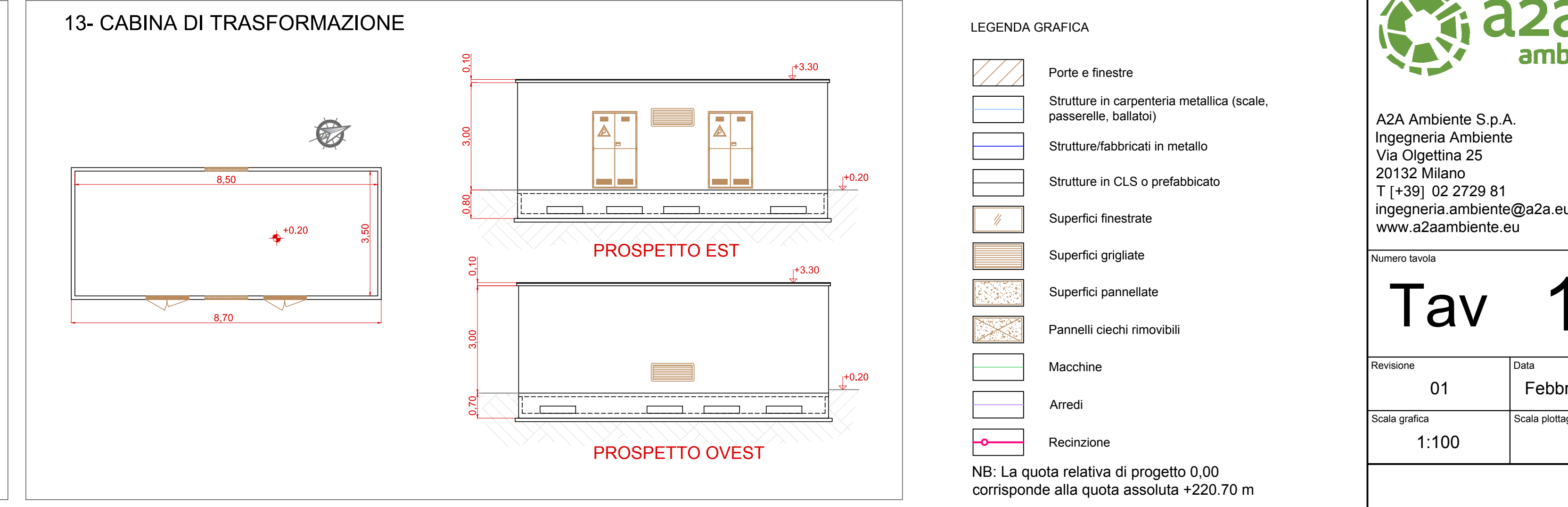
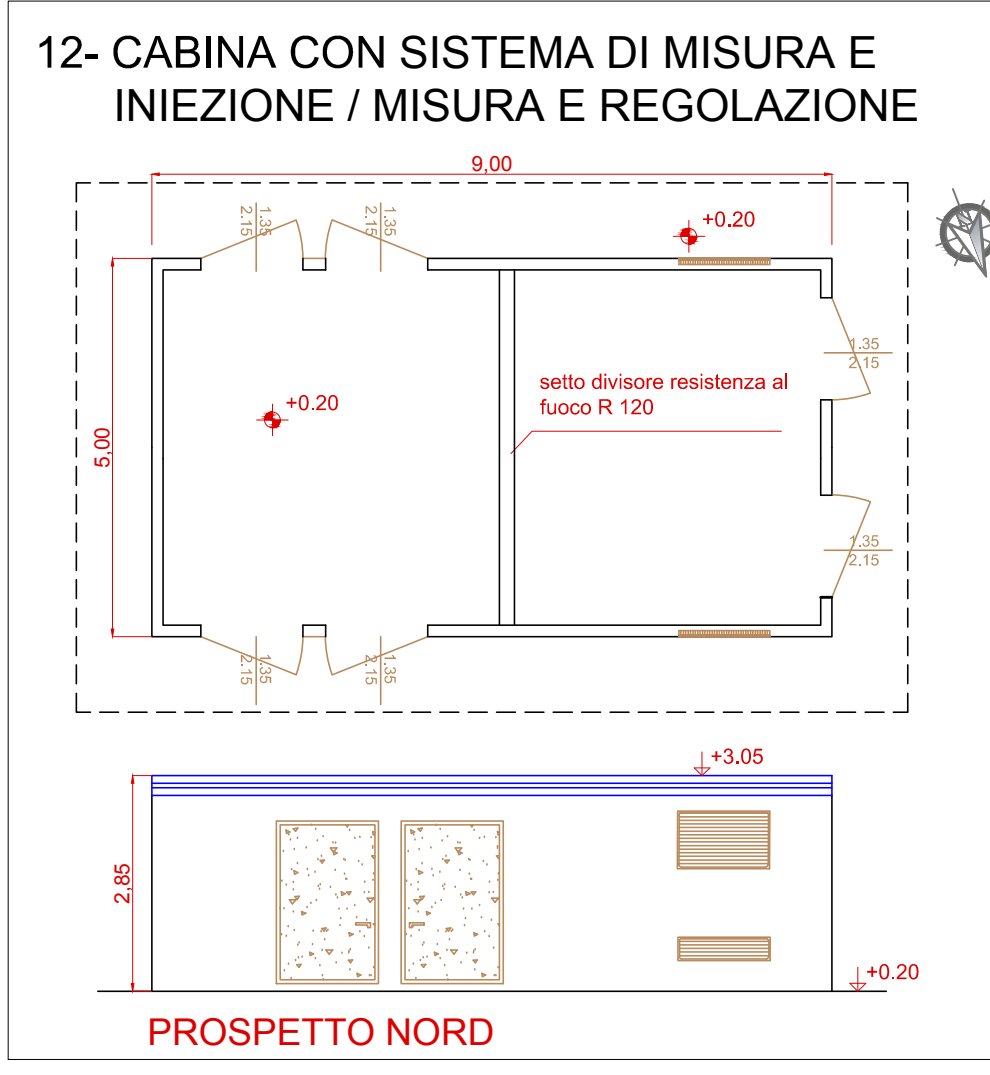
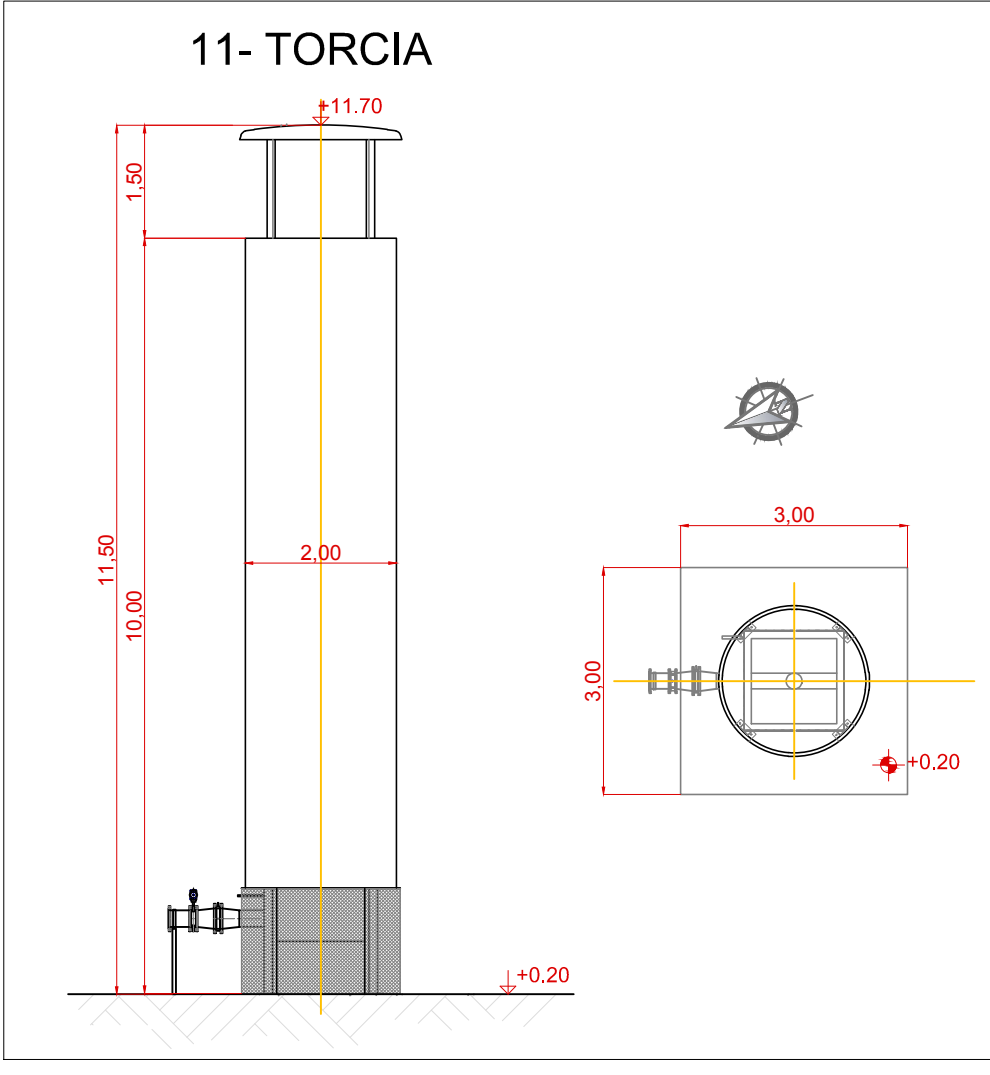
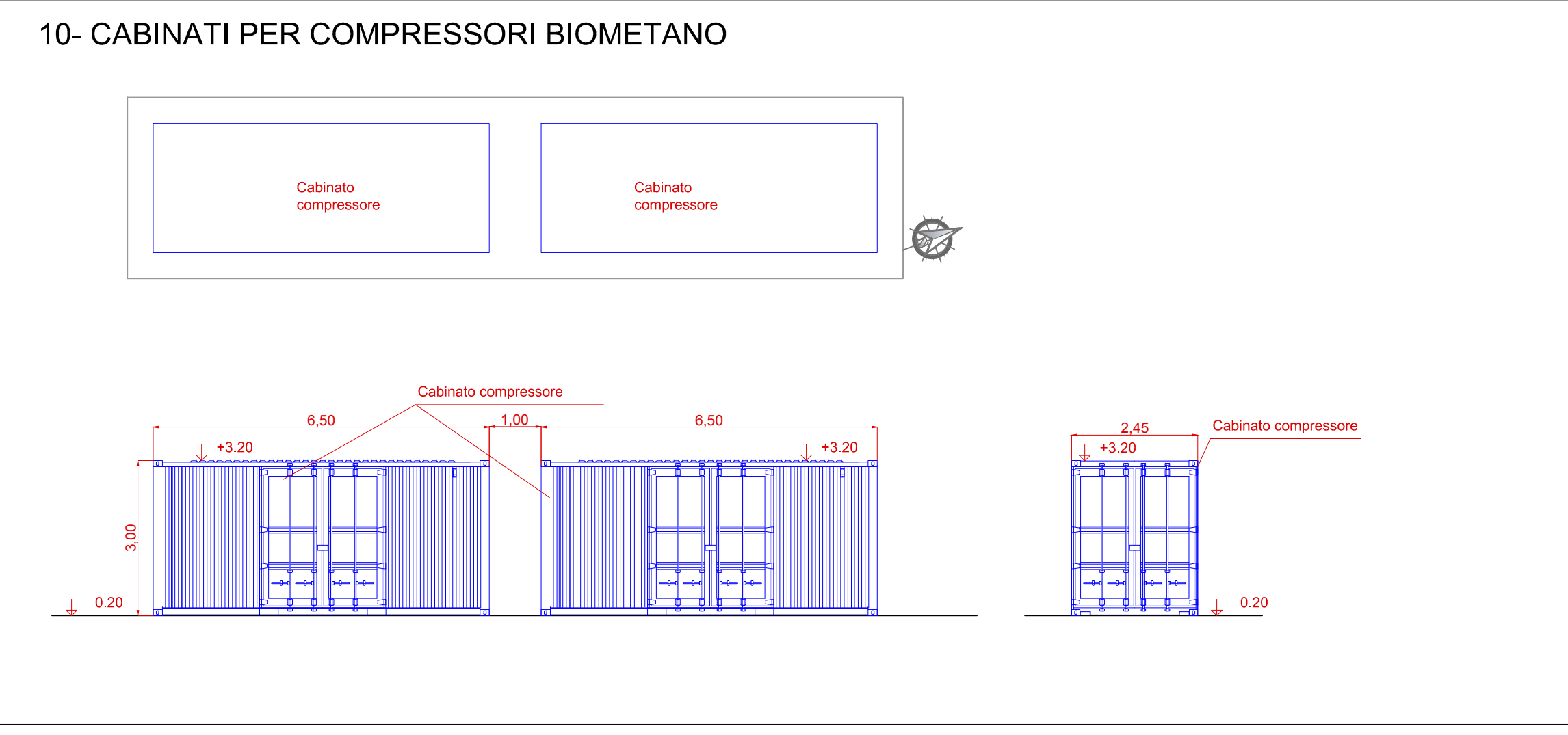
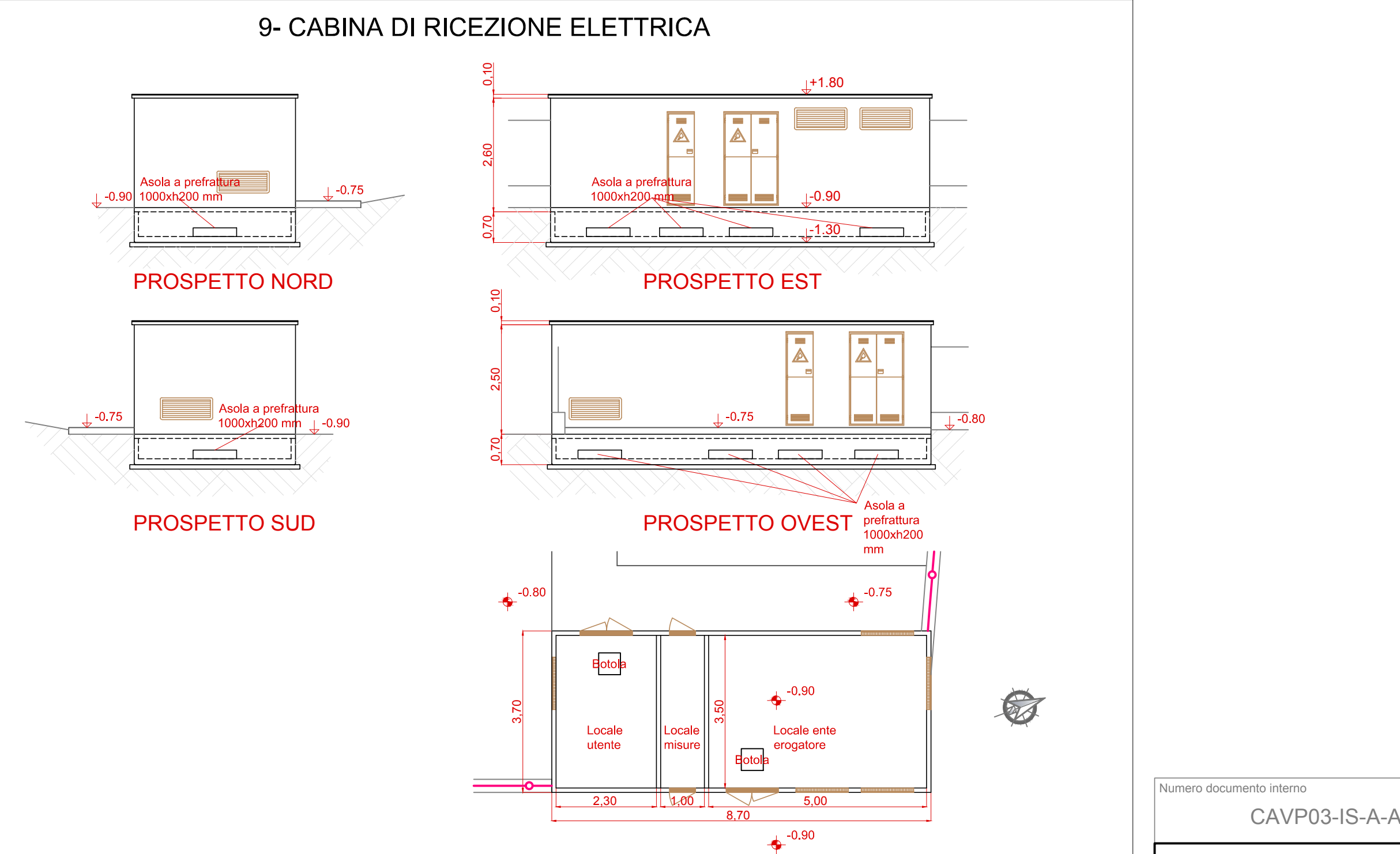
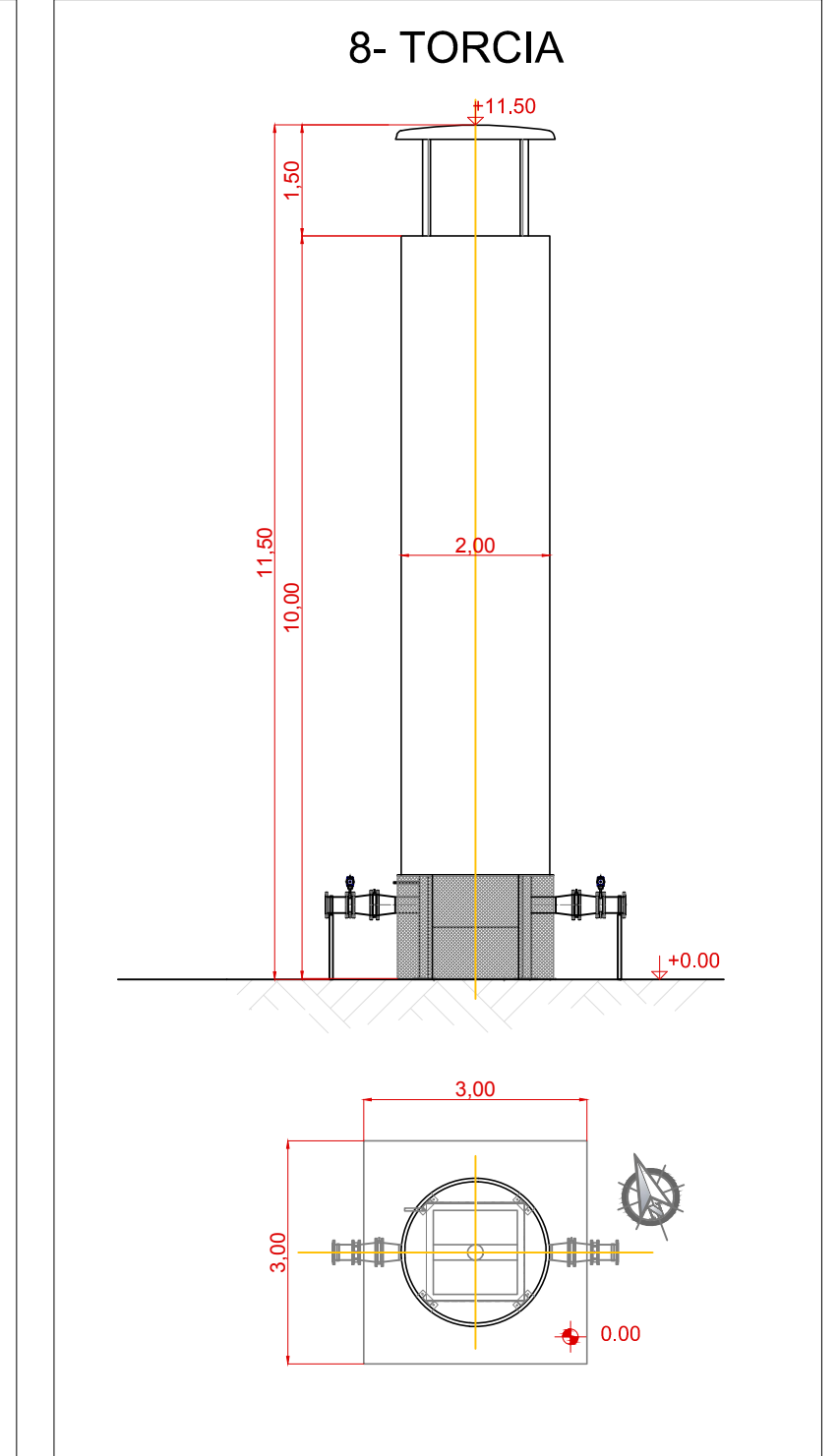
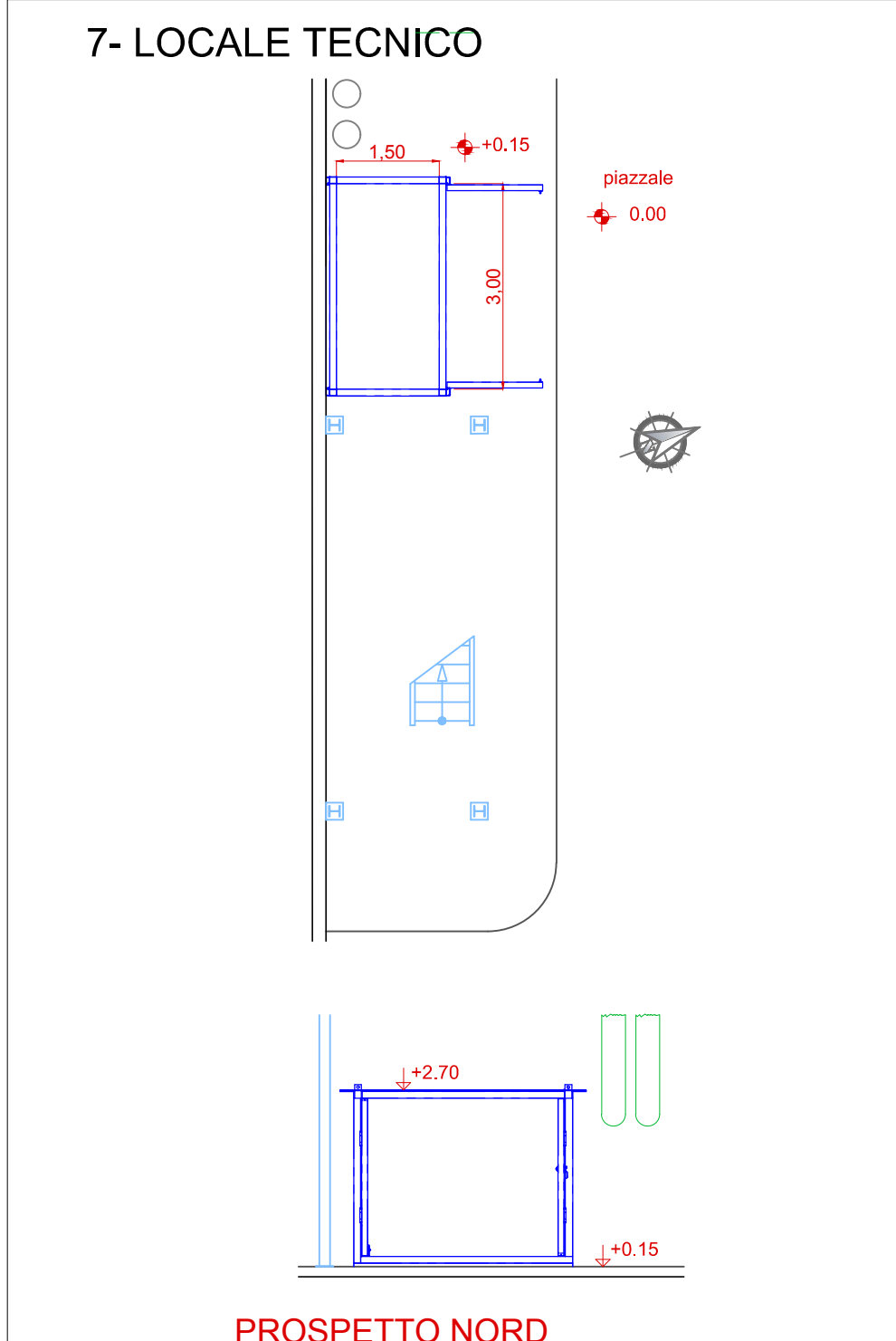
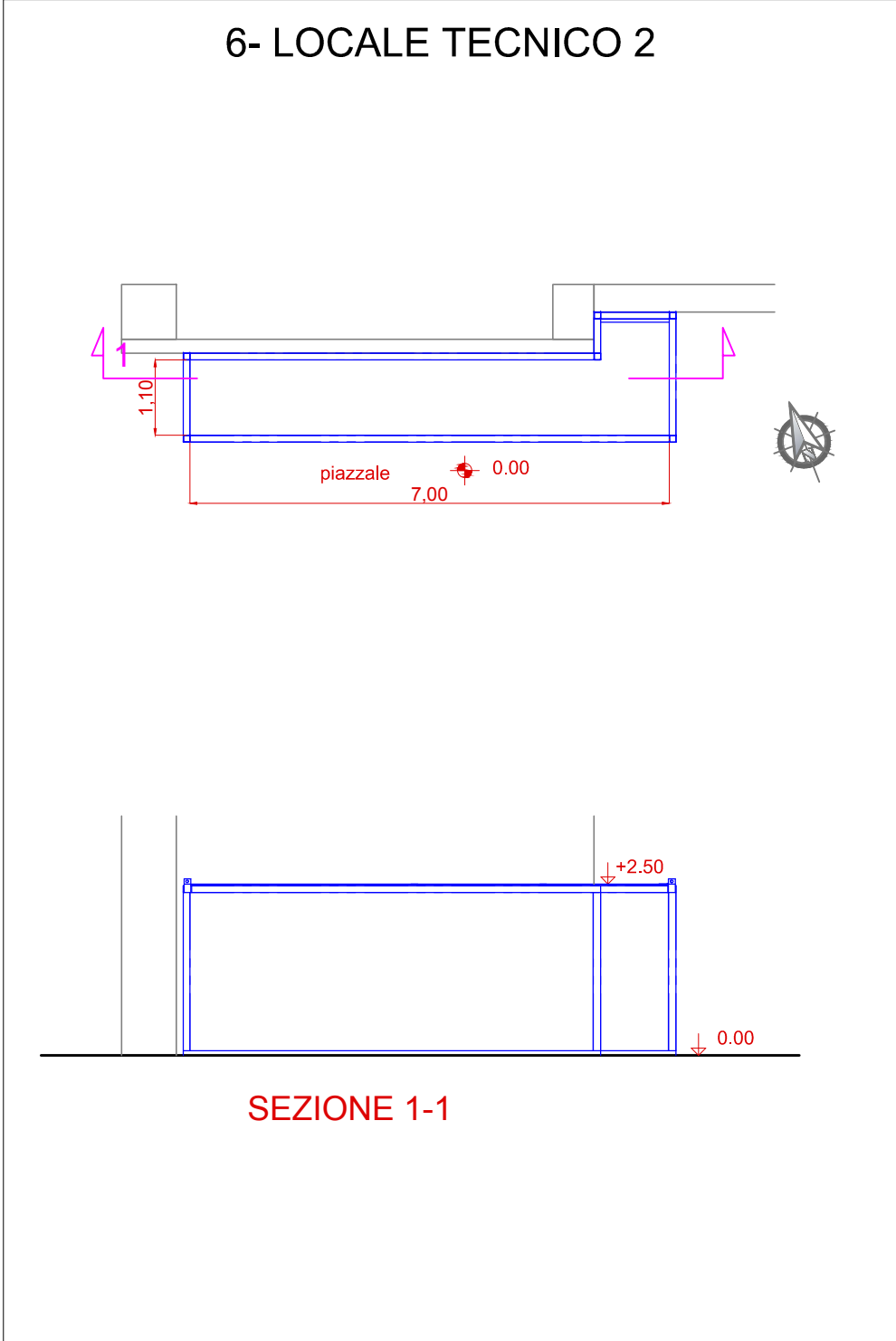
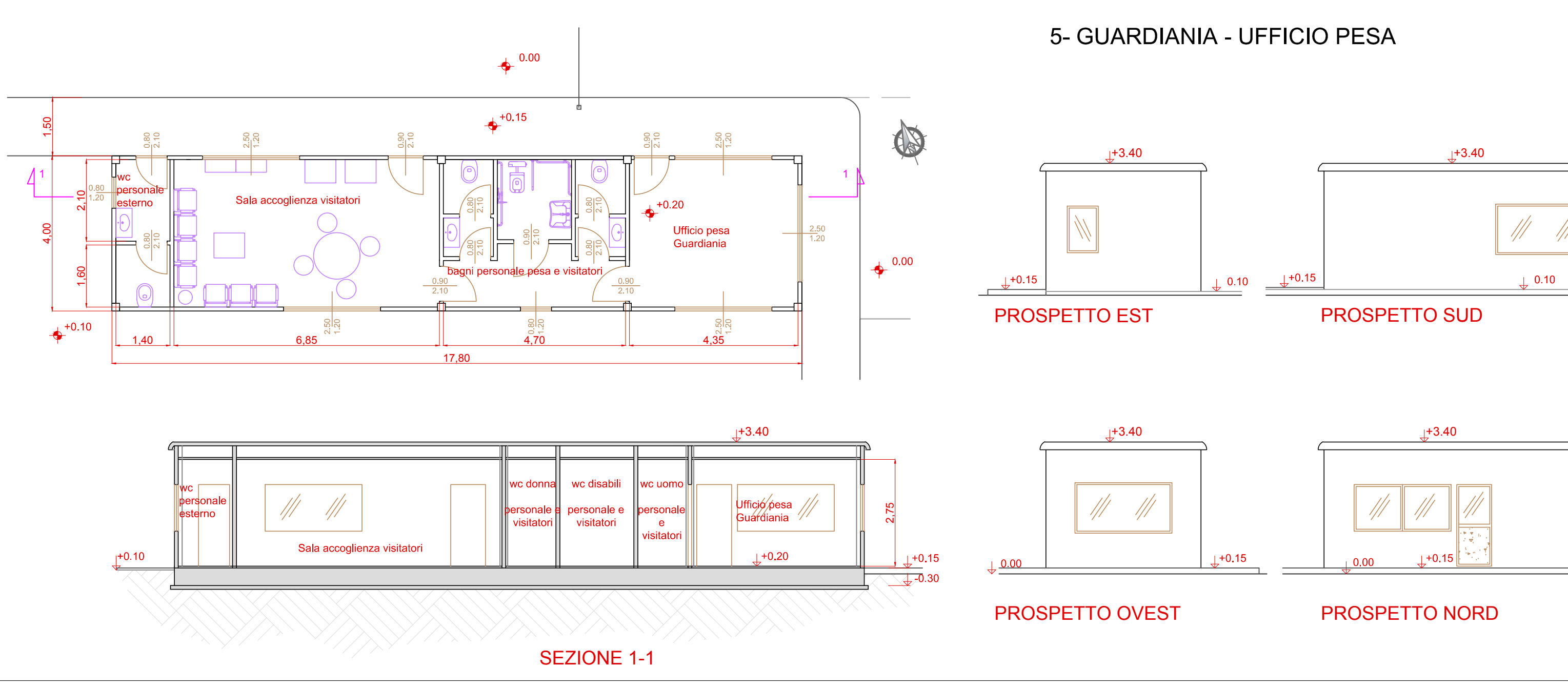
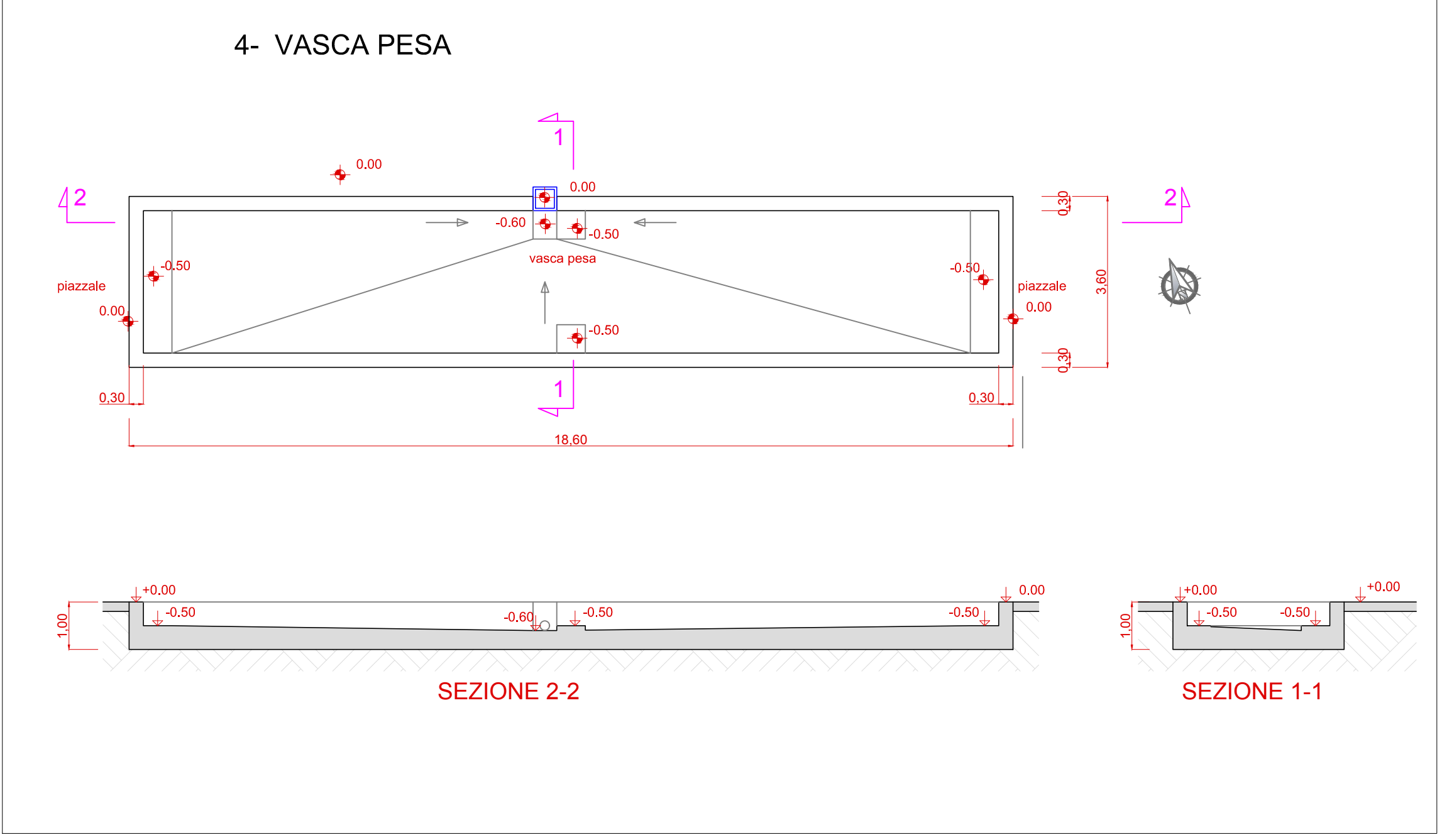
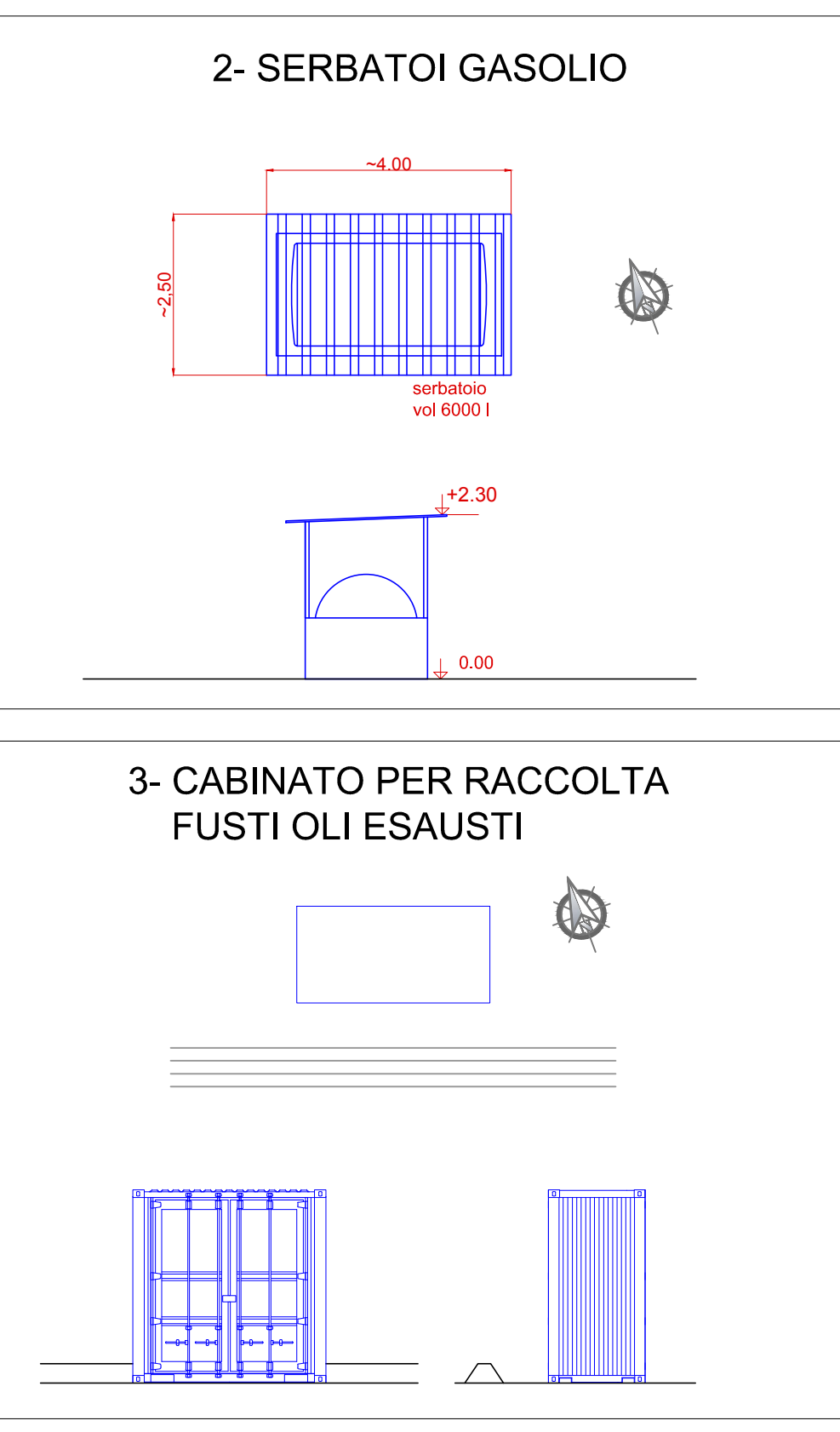
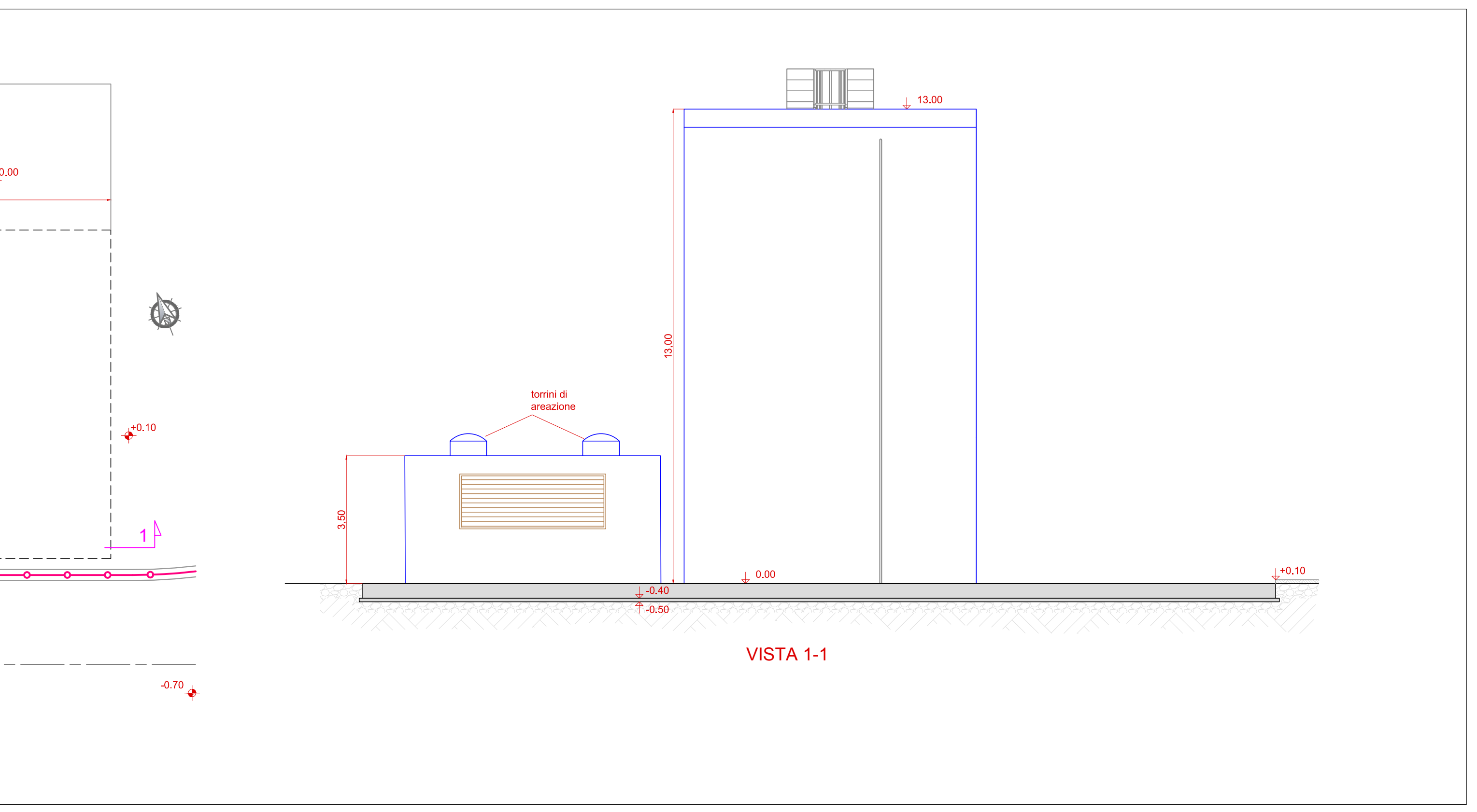
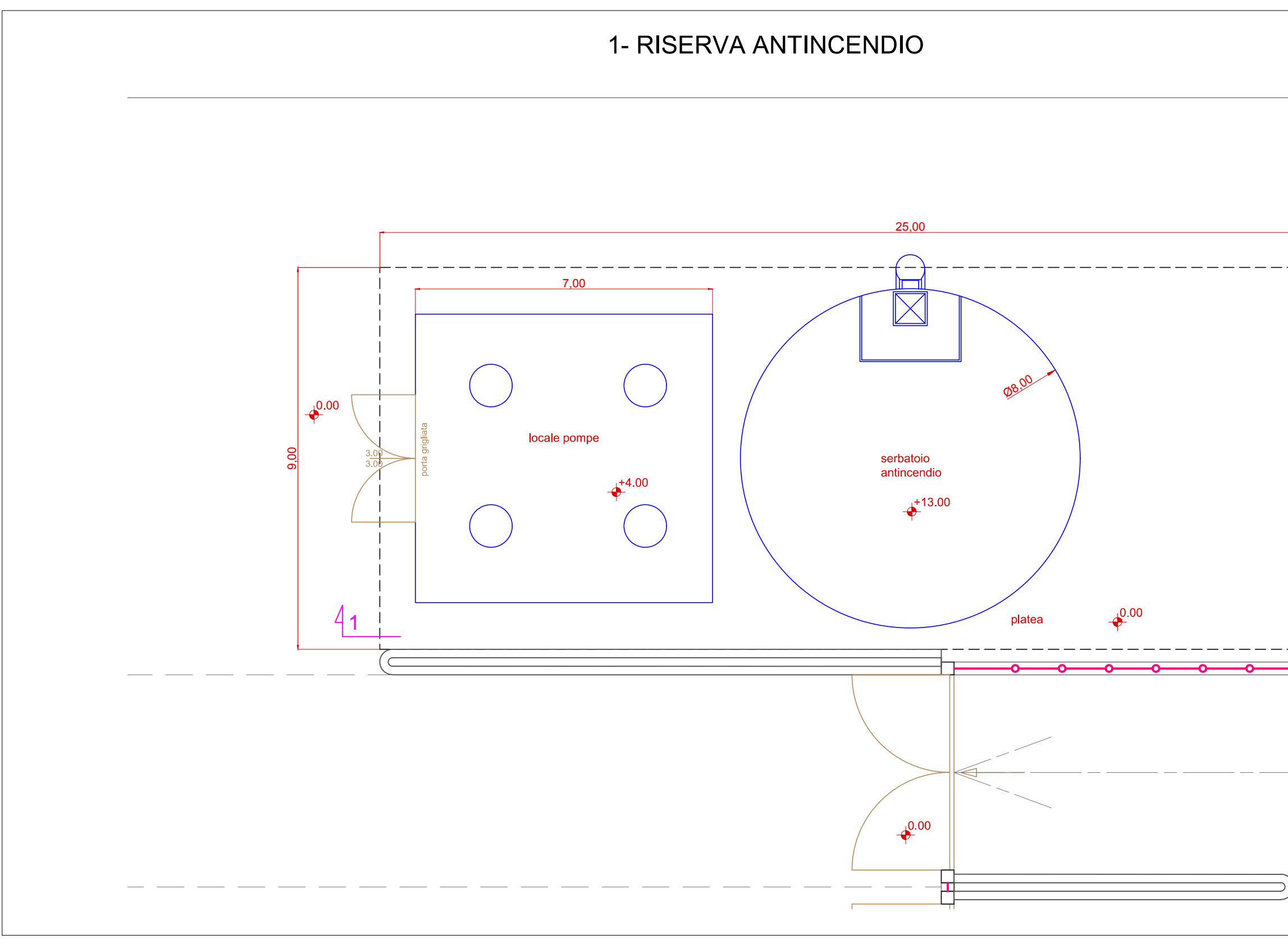


PIANTA CHIAVE



- LEGENDA GRAFICA
- Porte e finestre
 - Strutture in carpenteria metallica (scale, passerelle, ballatoi)
 - Strutture/fabbricati in metallo
 - Strutture in CLS o prefabbricato
 - Superfici finestrate
 - Superfici grigliate
 - Superfici pannellate
 - Pannelli ciechi rimovibili
 - Macchine
 - Arredi
 - Recinzione

Numero documento interno: CAVP03-IS-A-A-2-00-R01

Titolo progetto: Nuovo impianto di trattamento e recupero della frazione organica da raccolta differenziata

Località: Gerbido, Comune di Cavaglià (BI)

Titolo documento: Opere accessorie - Pianta, sezioni e prospetti

Verifica: P. Agostoni (Approvazione) / P. Rossignoli (Approvazione)

Progettista: A2A Ambiente S.p.A. (Committente)

Numero tavola: **Tav 11**

Revisione: 01 (Direttore lavori) / Data: Febbraio 2019 (Scala piantaggio)

Scala grafica: 1:100 (Scala piantaggio) / 1:1 (Scala piantaggio)

NB: La quota relativa di progetto 0,00 corrisponde alla quota assoluta +220,70 m